

Migrate, Hibernate, or Tough it Out

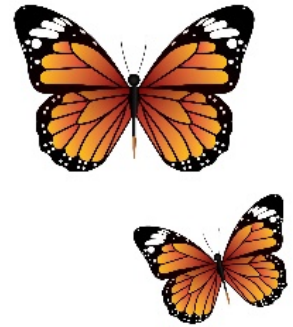
A Wildlife Survival Game

How to Play:

Facilitator says the name of an animal.

Players demonstrate through motion how the animal spends winter.

- Migration – flap arms and run about the room
- Hibernation - curl up in a ball on the ground
- Stay active - freeze in a “tough” pose



Quick Reference List of Animals that Migrate, Hibernate, and Stay Active during the winter.

Migrate

- Swan
- Sandhill crane
- Osprey
- Canada Goose
- Monarch Butterfly
- Bluebird
- Oriole
- Reindeer
- Hummingbirds

Hibernate

- Ground squirrel
- Chipmunk
- Turtle
- Ladybug
- Skunk
- Snake
- Snail
- Frog
- Salamander
- Bat
- Mouse
- Woolly worm
- Bumble bee
- Raccoon
- Bear
- Groundhog or woodchuck

Stay Active

- Coyote
- Rabbit
- Goat
- Horse
- Fox
- Deer
- Pig
- Cat
- Opossum
- Duck
- Tree squirrel



***No list is perfect and animals behave differently based on species and geographic distribution.*